



सुदूरपश्चिम विश्वविद्यालय FAR WESTERN UNIVERSITY

BULLETIN

THIRD EDITION
MAHENDRANAGAR, KANCHANPUR
JUNE, 2022

Message from Vice Chancellor

Established 13 years ago following the multi-university concept, Far Western University (FWU) is formed by incorporating the community campuses under the university umbrella. It has been operating academic activities for more than a decade. On the occasion of the 13th anniversary of the university, I would like to express my best wishes to all the students, teachers, staff, and parents.

With the inclusion of selected community colleges spread over nine districts of Sudurpaschim Province, Far Western University is expanding in terms of its catchment area and students' strength. Last year, Kailai Multiple Campus was included as the constituent campus of the university. We are now planning to start a medical college. The university is determined to achieve its goals of providing quality higher education by revisiting pedagogic practices, building the capacity of the educators, inviting academic particularity in a semester system, imposing academic rigors and creating research opportunities.

The unprecedented havoc, created by Covid-19, hindered university's academic and extracurricular activities partially for two years affecting students' and teachers' health, academic calendar, teaching and learning activities of the students and infrastructure development works of the university to a large extent. However, this unfavorable condition opened up new possibilities of using technology to run teaching-learning activities and research programs both on virtual space and physically.

The university is supporting the faculty to enhance their research and build their capacity. For supporting them, the university organized 'Scholarly Publishing Summer Institute' on June 2-3, 2022 mainly to spark faculties' interest towards publication and research works. The first issue of the university's journal *Far Western Review* is undergoing the review process. The Centre for Language, Literature, and Culture has started to collect the folk tales of far western region which will be published by the university within this year. Similarly, an international conference on the theme 'Sudurpaschim Studies: Heritage, Innovation and Transformation' is scheduled on December 12-13, 2022 in order to generate a discourse on Sudurpaschim. Campuses and departments also conduct trainings and seminars on their own.

FWU has introduced the Centre for Language, Literature, and Culture, Curriculum Development Centre, and Planning Council this year to fulfil the objectives of the university. Academic programs are being added gradually. Along with M. Phil, and Ph. D. research programs in Humanities and Social Sciences and Education faculties, FWU has started M. Phil. and Ph.D. programs in Faculty of Management this year. The university has made a plan to introduce new faculties and run some new programs in existing departments and faculties in upcoming days. Moreover, as per the decision of Nepal government, academic and infrastructural preparations are being made to start a medical college under the Faculty of Health Sciences. Even as the university enters its 13th year, full integration of campuses has not taken place; the management of teachers and staff, the construction of infrastructural facilities, the expansion of educational disciplines and research activities have not been very satisfactory. These are areas the university has been focusing on with urgency.

The university has started the work of managing the teachers and staff in all the 16 campuses of FWU; it is committed to expand and strengthen its academic programs, develop a culture of learning and research among students and teachers, adopt an academic calendar, revisit teaching and evaluation methods, prepare for both traditional and alternative teaching environment. It is imperative to run the university in a way to evoke towards it a sense of respect in the society by developing it as a domain of awe and inspiration..

All this is possible only through collective efforts. So I humbly request all the teachers, students, staff, parents and social workers to support the university. I believe that only our collective efforts will lead to the academic and material upliftment of this university

Finally, I would like to express heartfelt gratitude to all the stakeholders who have struggled and taken the initiative for the establishment of the University. I sincerely request for your continued support to make the university a respected destination of learning.

Prof. Amma Raj Joshi, Ph. D.

Vice Chancellor

June 17, 2022 (Ashad 3, 2079)

Message from Registrar

It has been a little more than a decade since the establishment of Far Western University (FWU) in 2010 AD. In these eleven years the university has launched diverse academic programs under the Faculties of Humanities and Social Sciences, Education, Management, Science and Technology, Engineering, Agriculture and Law. Many of the programs and courses under different faculties have been extended to the university's constituent campuses in all the districts of the Far West, and efforts have been made to improve the infrastructure there to facilitate learning and teaching in a more conducive environment. These academic endeavors of FWU are aimed at actualizing the aspiration of the people of Far West for equal opportunities in the sector of higher education, and producing competent human resource in all fields.

FWU's ambitious five years strategic plan aims at further enhancing research, infrastructure development, and diversification of academic programs all of which are mandatory to establish the university as a center of quality education, research, and innovation that meet the needs of society in the Far West and beyond.

The present issue of the university bulletin published on the occasion of the 13th Establishment Day of FWU includes descriptive information of developments in all the faculties and departments in the university, and in the constituent campuses. I would like to take this opportunity to extend my appreciation and deepest gratitude to each and every individual who has directly and indirectly made a contribution to the developments, and are committed to extend their unconditional support in the continued progress of FWU.

Heartiest congratulations to everyone on the auspicious 13th Establishment Day of Far Western University. Wish you all the best for future.

Prof. Yagya Raj Pathak

Registrar

Phone No.:+977-99-520729

Email: registrar@fwu.edu.np

Far Western University: Brief Introduction

Far Western University (FWU) is a government funded autonomous higher education institution established in 2010 AD by the Act of the Parliament under the multi-university concept. The establishment of Far Western University had been the prime requirement for the development of the Far West, and also a longstanding demand of the public in the region. To honor the sentiments of the people, and expedite regional development, Far Western University was established under Act Number 01 of the Parliament of Nepal.

FWU launched its academic programs after the inclusion of Shree Siddhanath Multiple Campus in the university in 2012 AD as per the provision in Far Western University Act, clause (03), sub clause (2) that states that the *Far Western University shall be established at the premises of Siddhanath Science Campus, Bhimdattanagar, being operated in the Bhimdatta Municipality of the Kanchanpur District as a constituent campus of Tribhuvan University upon receiving donation from Government of Nepal, and jointly including the affiliated campus of Tribhuvan University namely Siddhanath Multiple Campus, Bhimdattanagar.*

Currently, FWU has been administering its academic programs in its Central Campus and fifteen constituent campuses situated in the nine districts of the Far West under the faculties of Management, Education, Humanities and Social Sciences, Science and Technology, Engineering, Agriculture and Law. Currently 17, 238 students are enrolled in the university, out of which undergraduate enrollment is 15,709 and graduate enrollment is 1371. Likewise the number of students enrolled in MPhil and PhD are 142 and 16 respectively.

The FWU central office is situated in Bhimdatta Municipality, Ward No. 18, Saalghari, and its premises are spread across 12 bighas. The university also owns 07 bighas of land in Ward No. 15, Gobraiya where the university plans to begin construction of official residences for university officials, faculty members, staff and a student hostel in the current fiscal year.

VISION

To gain recognition as a prime university committed to quality education, research, and innovation that meet the needs of society.

MISSION

To provide scholarly and flexible professional environment by devising academic programs, institutional structure and mechanisms that enable faculty, students and staff to make contribution towards the advancement of knowledge and thereby developing active citizenship through teaching, research, collaboration and community engagement.

CORE VALUES AND PRINCIPLES

Academic excellence: Provide the best possible education considering all aspects of students' academic development by adopting dynamic teaching-learning environment

Lifelong learning: Develop and impart positive attitude through continuous learning to act cautiously even in adverse situation

Respect: Foster the culture of accepting differences in community cultures, values, beliefs and respecting individual rights & diversity while promoting humanity, unwavering exploration of novelty and unconditional commitment to truth and knowledge

Sustainability: Consider sustainability in all aspects of its operations including research and education

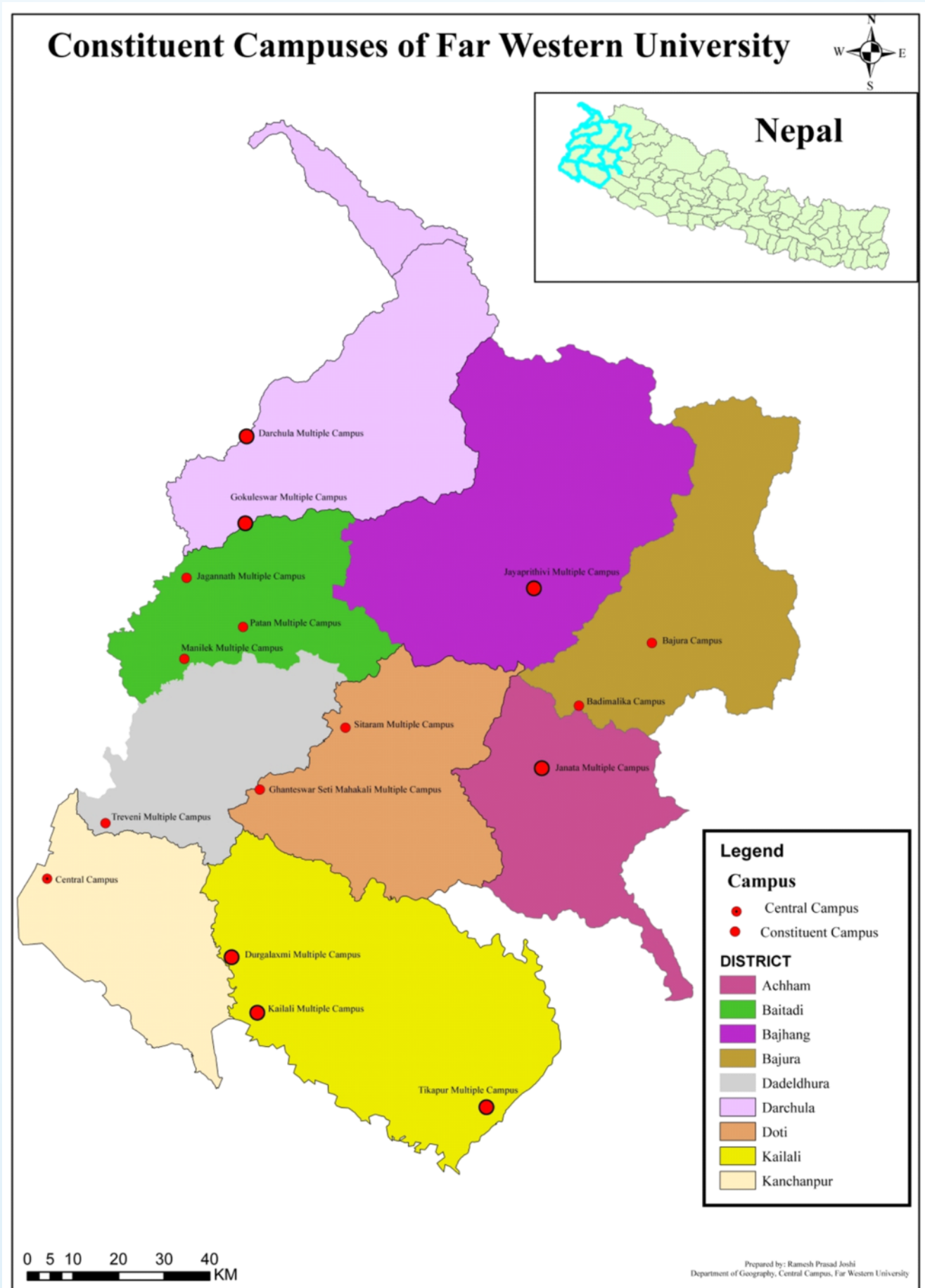
Integrity: Develop the culture of trust, honesty and fairness in all actions and words

Accountability: Encourage sense of responsibility on the processes and outcomes of every action

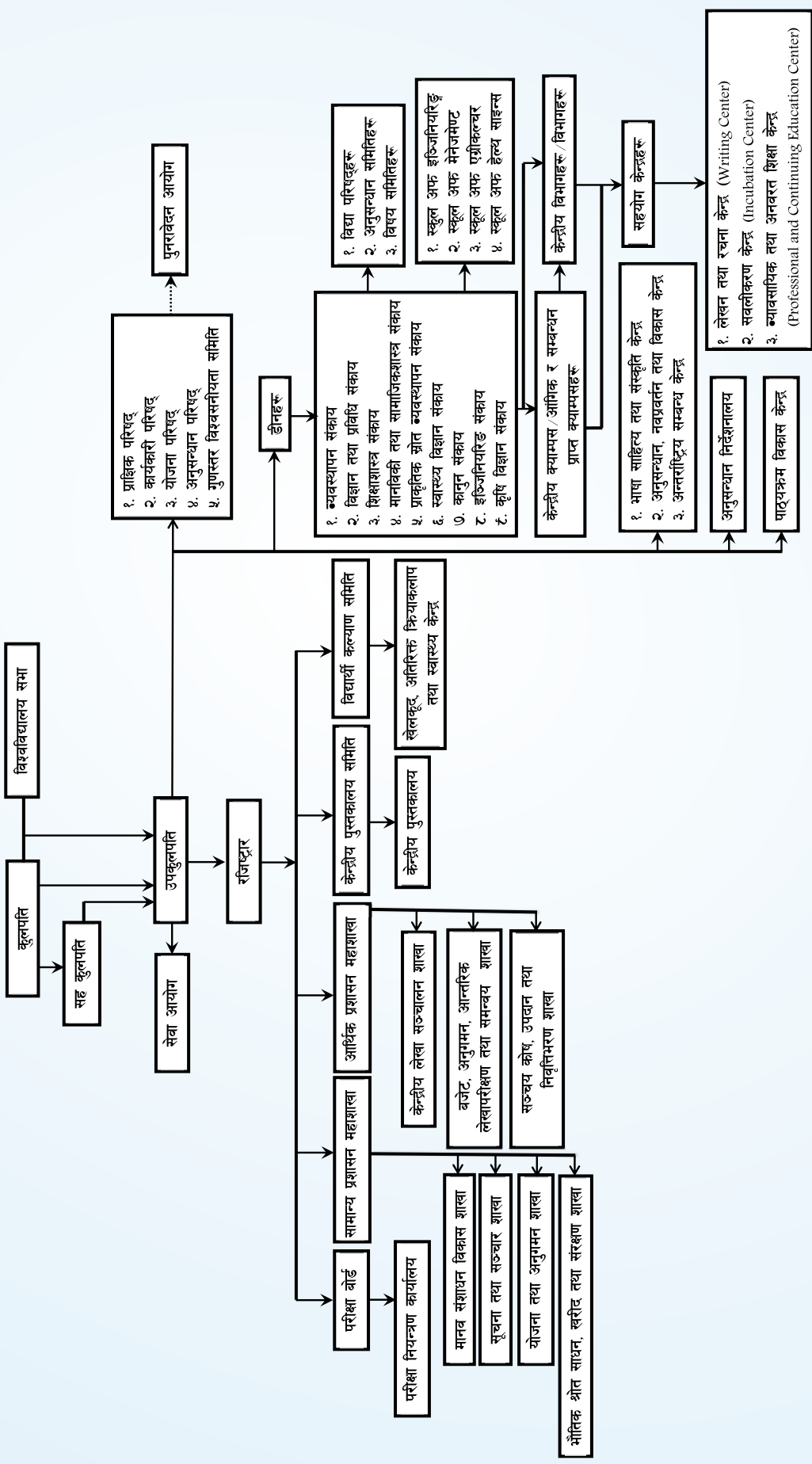
GOALS

- Provide quality education and experience, which equips students with the values, skills and intellectual discipline,
- Create opportunities and support for research by enhancing the public engagement, and
- Ensure the financial and environmental sustainability of the university.

Geographical Location of the Constitents Campuses of the University



सुदूरपश्चिम विश्वविद्यालय संगठनात्मक ढांचा



Introduction to the Faculties in the Far Western University

Faculty of Humanities and Social Sciences (FoHSS)

Faculty of Humanities and Social Sciences (FoHSS) is where students generate new ideas, and develop a comprehensive understanding of the society at large. Being a multidisciplinary faculty, it offers a broad spectrum of disciplines. The faculty is therefore established as a place where students have opportunities to learn about a wide range of perspectives. Through their engagement in the various disciplines they explore human sensibilities, reason, science, language and dialects, philosophy, economy, political system, and world order.

Far Western University, FoHSS offers undergraduate, graduate, MPhil, and PhD programs and courses. At the undergraduate level the faculty offers B.A. in: Nepali, English, Economics, Geography, History, Sociology, Journalism and Mass Communication, Political Science, Development Studies and the newly launched BSW. The faculty also offers graduate programs in Development Studies, English, Sociology and Economics and has plans to launch graduate program in Nepali as well in the coming academic session.

FoHSS expanded its academic programs by launching MPhil and PhD in the academic session 2021 AD. Currently the faculty offers MPhil in Nepali and English, and PhD in English. The undergraduate and graduate program of the faculty are run by the Central and constituent campuses, while MPhil and doctoral programs are run under the Dean's office.

Along with introducing new courses, the faculty has initiated the process of moderation of all courses at the graduate and undergraduate levels to update and improve the course content to meet the challenges of, and make the most of the opportunities in the changing times.

On behalf of the entire faculty I would like to extend my best wishes on the occasion of the 13th Establishment Day of the Far Western University.

Prof. Dr. Mukund Ballabh Kalauni

Dean

Phone No. – 099 - 590009

Email: dean.humanities@fwu.edu.np

Faculty of Education (FoE)

Far Western University is a leading institution in the field of higher education in the Far Western Province of Nepal. The Faculty of Education started with the establishment of this university. The educational philosophy of the Faculty of Education is commitment to the integrated development of the core values of a culture of inclusion, equality, indigenouness, justice, research and innovation. Despite various challenges, the Faculty of Education has initiated significant efforts in the development of the education sector in the Sudurpaschim as well as Nepal within a short period of its establishment.

FoE believes that the overall development and progress of the country is possible only with the human resources of skilled, confident, highly knowledgeable, scientific thinking, artistic skills and positive attitude towards the profession that can attract the learning environment of the classroom. It aims to equip teachers, academic leadership and researchers with the knowledge, skills, abilities and values needed for today's classroom and beyond, while helping learners to excel in the profession of their choice.

The Faculty of Education has a dynamic and creative team of faculty members. They are active in teaching as well as in research. Our experienced faculties inspire the students to excel in every sphere of human activity and face the present world as much as possible. The Faculty of Education focuses on activities that foster relationships between students and teachers and create a collaborative educational environment that fosters new ideas and concepts.

The Faculty of Education conducts undergraduate (B.Ed.), graduate (M.Ed.), M.Phil leading to PhD and PhD programmes. All the sixteen campuses of Far Western University are offering undergraduate (B.Ed.) level programs in various disciplines and nine campuses are offering graduate (M.Ed.) level programs. MPhil leading to PhD programs in Nepali Education, English Education and Curriculum, Planning and Leadership (CPL) are being conducted through the Dean's Office. The faculty plans to run undergraduate programs in Curriculum, Planning and Leadership (CPL), Special Needs Education (SNE) and Computer Science and Information Technology (CSIT) programs in M.Ed. In addition, a revision process has been initiated to make course content time-relevant in undergraduate and graduate level courses.

FoE faces several challenges no doubt, but we are trying our best to overcome the obstacles. It is the need of the hour to address the challenges facing our schools and communities in a deep, empirical and practical way. Unless the foundation of school education is strong, social and educational transformation is just a fantasy. For this, FEW FoE needs to be strong, capable and research-oriented. There is a need to strike a balance by increasing internal efficiency and external effectiveness. It requires constant positive thinking, affirmative action and collaborative efforts.

Dr. Bhawan Singh Chalaune

Dean

Phone No. 099-590112

Email: dean.education@fwu.edu.np

Faculty of Management (FoM)

In the last few decades, management education has grown as a field of knowledge with tremendous opportunities and multifaceted challenges. To meet these challenges successfully, the Faculty of Management (FoM) of Far Western University (FWU) is designing and implementing new, professional and market-oriented courses and innovative learning pedagogies.

At present, FoM is running undergraduate programs (BBA and BBS), graduate programs (MBA, MBM and MBS) and postgraduate research degree programs (MPhil and PhD). Graduate programs are aimed to prepare students for corporate leadership roles in the desired field, entrepreneurial management and community collaboration. The MPhil degree in Management is an advanced postgraduate research degree, and it aims at enabling students to think critically and deeply about management as a field of study. The university's PhD program in management is designed to develop qualified scholars who will pursue distinguished careers in teaching, research and consultancy. The purpose of PhD program is to groom promising young researchers to be innovative academic leaders, management practitioners and thinkers in the field of management.

The Office of the Dean expects that the determined efforts of students with the guidance of highly dynamic university authorities and qualified faculty members would definitely provide a blissful and successful life to our students.

Prof. Dr. Padam Raj Joshi, PhD

Dean

Phone No.- 099-520729

Email: dean.management@fwu.edu.np

Faculty of Science and Technology (FoST)

Faculty of Science and Technology was established along with the establishment of Far western University in 2069. From the beginning of its establishment, faculty of Science and Technology is launching different academic programs in Science and Technology in under graduate level and around 500 students are studying in different semesters. Within this faculty, Physics, Chemistry, mathematics, Zoology, Botany, Microbiology and environmental science are major subjects in General science stream and Computer Science and Information Technology (CSIT) as a Technical stream. Within this faculty, academic programs in general sciences and computer science are also running in Kailali Multiple Campus, Dhangadi, Kailali and Gokuleshor Multiple campus, Darchula. Faculty of Science and technology will be launching some other technical streams in unde graduate level like food technology, Forestry, health sciences, medical microbiology etc in near future. After that the programs of Master's level in physics and Computer Science and Informational Technology, mathematics are also in pipe line.

Prof. Dr. Bhawani Chand Thakuri

Dean

Phone No. 099-520729

Email: dean.science@fwu.edu.np

Faculty of Engineering (FoE)

Engineering education at Farwestern University was started from 2014 AD with an intake of 48 students per year in Bachelor of Civil Engineering Programme under the School of Engineering, Faculty of Science and Technology. The Faculty of Engineering was established in 2016 AD and all the engineering programs are now operating under this faculty at School of Engineering in the premises of University Central Campus at Mahendranagar. The Faculty of Engineering envisions to become a center of excellence in engineering education and research, and produce globally competent professional minds with human values and ethics to serve the society by taking part in industrial, scientific innovation, academic and entrepreneurship activities within the country and abroad. With its mission to deliver quality education and achieve excellence in teaching-learning and research activities through the state-of-the-art, high technology engineering educational programs, the Faculty of Engineering has also started Bachelor of Computer Engineering Programme from the academic year 2020/21 with an intake of 48 students per year. There are now 327 students studying Civil Engineering and Computer Engineering at School of Engineering.

The graduates from the Faculty of Engineering are now working in diverse sectors including governmental and non-governmental organizations. Focusing on the equal access to education, the School of Engineering has been offering scholarship to 24 students in each programme in undergraduate level under different categories including merit-based scholarship (7 students); district wise scholarship (9 students from districts of far-western region); inclusive scholarship (6 students) including disabled, women, backward region, indigenous community, Madhesi and Dalits; and scholarship to staff and their children (2 students). With its highly competitive teaching staff, students get greater exposure to both professional and academic knowledge on the diverse field of engineering. To meet the increasing demand of the competitive technical human resource in national and international market, the Faculty of Engineering has decided to start Master of Science in Construction Project Management programme from Mangsir 2022 AD with an intake of 30 students per year. It will also start Bachelor of Architecture programme from 2022/23 AD with an intake of 48 students per year, and Master's Degree in Structural Engineering from 2023/24 AD.

The Faculty of Engineering is also attempting to promote collaborative efforts to enhance its academic environment. It has collaborated and signed MOU with different institutions including Gyeongsang National University, Korea; Nepal Society of Earthquake Technology (NSET) Nepal; and Bhimdatt Municipality, Mahendranagar. It has been now working on a collaborative project entitled "Bhutan+ Nepal Higher Education for accomplishing Sustainable Development Goals". This project aims to integrate sustainable development goals into university system and provide opportunities to the staff and students of the University to visit other partner institutions. In future, the faculty will also start postgraduate research programmes in engineering field.

Dr. Kishan Datt Bhatta

Dean

Phone No.- 099-520729

Email: dean.engineering@fwu.edu.np

Faculty of Agriculture (FoA)

The Faculty of Agriculture (FoA) is a flagship technical faculty amongst the other seven faculties of Far Western University (FWU) and it ensures the qualitative agriculture education by adopting the innovative teaching practices with recently revised and advanced course curricula, well-equipped lab structures and qualitative professors of multi-disciplinary nature and with need based research activities for the extension of new innovations to the public society. From its establishment in 2018 AD at the fertile and virgin land of Tikapur, Kailali, the FoA has been providing quality education to the general public and public from the lower quintiles of the population with its affordable programs in different disciplines as well as striving to introduce new courses that are relevant for the overall development of the economy, especially in the far-western region. As per the national level multi-university concept in the country, the FoA makes academic and educational atmosphere more fair, discipline and result-oriented. At present we are teaching about 400 B Sc Ag graduates enrolled regularly in different academic years from 2018 AD. Recently, we have published the magazine "Krishi Bigyana Prabidhi Darpan" for the welfare and publicity of the agriculture faculty to the society.

The FoA under FWU has formed a Subject Committee in Agriculture and is planning to form three functional academic departments named: i) Social Sciences (Agricultural Economics, Agricultural Extension and Rural Sociology), ii) Plant Sciences (Agronomy, Plant Breeding and Agricultural Statistics, Horticulture and Agro-forestry, Plant Protection (Entomology and Plant Pathology), Soil Science and Agricultural Engineering, and Basic Sciences (Bio-chemistry, Crop Physiology and Environmental Sciences), and iii) Animal Sciences (Livestock Production and Management, Animal Nutrition, Animal Breeding and Aquaculture). Accordingly, the faculty focuses its prompt effort on the permanent recruitment of the multi-disciplinary faculties and administrative staff with highly motivated academic status, research background, extension desires and administrative experiences.

Preparation of five-year strategic plan (2020/21 - 2024/25) with defined organogram for the construction of separate academic and research hub, hostel facilities separately for the boys and girls, library, identical farms of Agronomy and Seed Production, Horticulture and Agro-forestry, and Animal Science and Fisheries are being planned and few of them are executed to run the allied program in more effective and harmonious ways. Planning to enhance the quality standard of B Sc Ag degree and establishment of the new courses in BSc Forestry is being proposed to the University Academic Council. Moreover, the administration sections resembling, i) General Administration, ii) Account, iii) Academics and Examination, iv) Library, v) Sports and Extra-Curricular Activities, vi) ICT Laboratory, and ix) Dispensary are also included in the strategic plan. Formation of Research and Extension Cell/ Unit with the triangular role of teaching, research and extension will be the major agenda of the FoA. The FoA is trying its best to manage the congenial academic environments and searching the collaborating organizations both at national and international levels. At national level, works are initiated with University Grants Commission (UGC), the Farwest Provincial Government and other governmental and non-governmental organizations. At international level, collaborations have already been started with a memorandum of Understanding (MoU) between Geyongsang National University, South Korea; Tuskegee University, USA; IRRI, the Philippines; and ICIMOD for the research and academic excellence of the FoA/FWU.

On the eve of the 13th anniversary of the Far Western University, I express my immense pleasure and welcome you all from the FoA, Tikapur, Kailali.

Thank you.

Prof. Lal Prasad Amgain, PhD

Dean

Email: dean.agriculture@fwu.edu.np

Faculty of Law

Far Western University (FWU), Faculty of Law (FoL) was established in the academic year 2020 AD, and undergraduate program BA, LLB was launched under the faculty in the same year. The five year (ten semesters) undergraduate program BA, LLB is currently running in three constituent campuses of FWU: Central Campus, Tikapur Multiple Campus and Kailali Multiple Campus.

In order to make the legal education compatible with changed national and international context, Five years BA, LLB, (Bachelor of Arts and Bachelor of Law) program basically aims at enriching students with comprehensive theoretical and practical knowledge in indigenous as well as foreign legal traditions, lawyering skills, and research to meet the challenges of the time. To ensure quality education minimum numbers of students, that is 48, are recruited under the program, and students are recruited through entrance examination. Legal knowledge provided in the BA, LLB program certainly aims at enhancing the capability of the students to get admission in higher legal studies in Nepal and foreign universities.

The BA, LLB program has some specific objectives such as: producing competent human resources equipped with the necessary skills, competency and integrity needed for the country, imparting sense of responsibility towards society, nation and world at large, developing a base for legal excellence with international and indigenous understanding, promoting research in socio-legal politico-legal arena, preparing competent human resources in the field of law and justice, and preparing human resources capable of defending human rights of backward, and marginalized group of the society. The University and Faculty shall make continuous efforts to achieve these objectives under the program.

FWU is in the process to equip the program with physical and other facilities involving infrastructure, library, and competent faculties. The program is expected to have positive influence in the process of mainstreaming the population in judicial process in this region. The students after completion of the BA, LLB degree, shall be playing positive and effective role in eliminating the age old caste discrimination, unemployment, gender based violence, inequality, and underdevelopment all of which have been major social problems in the Far Western region. The FoL, Dean's Office has been working on legal and institutional framework, and attempting to achieve various types of support from various governmental and nongovernmental institutions to ensure the quality of the legal education. While working on the legal and institutional framework, the Dean's Office expects meaningful cooperation from University, all level of government mechanism, civil society, students, guardians and the community at large.

Karn Thapa

Dean

Phone No. – 099 - 520729

Email: dean.law@fwu.edu.np

Far Western University: Directorate Language, Literature and Culture Directorare

Far Western University (FWU), Language, Literature and Culture Studies Center (LLCSC) has been established with the aim of preserving and developing the language, literature and culture of the region. The center recognizes the fact that the present social milieu demands an integrated and comprehensive approach in the linguistic, literary, cultural, social and educational study and research of the Far West by exploring and studying both written and oral folk literature of the region. In other words folk literature both, in the written and oral form, is an integral part of the linguistic, literary, cultural heritage of the region. The FWU, LLCSC therefore plans to conduct an intensive research on the folklores, folk songs, folk instruments and folk culture of the Far West. As the initial step of the research, the concerned authorities of the center have already initiated the task of collecting folklores prevalent in the entire region.

The changing mores of society impacted by modern systems of production, consumerism and materialism tend to divert the society from its roots. This apparently creates obstacles in the preservation and transmission of folk culture. FWU, LLCSC believes that timely measures are essential to sustain and preserve the region's cultural heritage, and for this the center plans to prioritize efforts to study, collect and record in the written form the language, literature and culture of the region, and subsequently make provisions for their digital archiving. LLCSC would like to extend warm wishes on the auspicious occasion of the 13th Establishment Day of FWU, and take this occasion to affirm its commitment to preserving, revitalizing and promoting the indigenous language, literature and culture of the Far West.

Dr. Harish Chandra Bhatta

Director

Phone No. 099-520729

Email: director.lang_culture@fwu.edu.np

Planning Chief

Far Western University, Planning Commission is set up under the Office of the Vice-Chancellor. The Planning Chief works as the member-secretary of the planning council, that is responsible for planning and policy making for the university. The responsibilities of the planning commission include managing and allocating resources, and supervising, evaluating, monitoring and facilitating development plans and programs.

The planning commission plays a key role in achieving the goals of the university by identifying the essential resources, preparing short term and long term plans, and implementing the plans. It is among the major responsibilities of the commission to ensure a planned development of the university which incorporates physical development as well as achievement of academic excellence by formulating and implementing plans for academic development, and improved physical infrastructure and human resources.

For the implementation of overall development plans the commission coordinates with the Government of Nepal, national & international government and non-government agencies and formulates plans to receive donation in the form of financial or physical support from individuals.

Suresh Singh Bhandari

Director

Phone No. 099-520729

Email: chief.planning@fwu.edu.np

Curriculum Development Center

The Curriculum Development Center (CDC), an important academic body of the Far Western University, plays a crucial role in the formulation, modification and implementation of the curriculum of the university. CDC also conducts seminars, orientation programs and workshops in collaboration with the subject committees. It publishes and distributes the FWU curricula and publications of the university under FWU rules and regulations and encourages teachers to prepare textbooks and other teaching manuals and materials. In addition to the above important functions, it verifies the academic certificates of FWU academic and administrative staff. CDC provides institutional equivalence as well as carries out activities including scrutiny of educational credentials for public service purposes. In the current context of the development of information technology, the center promises to impart information of FWU academic activities to stakeholders. To fulfill this objective, the Curriculum Development Center disseminates necessary information through the center's log-in page on the university website.

Dr. Rajendra Prasad Bhatt

Director

Phone No. 099-520729

Email: cdc@fwu.edu.np

Far Western University: Constituent Campuses

1. University Central Campus

University central campus was converted from Shree Siddhanath Multiple Campus (established in 1980 AD) after its inclusion in FWU in 2013 AD. It is located in Bhimdatta Municipality, Ward No. 18 and its premises spread across 187 ropani.

Central campus launched undergraduate academic session in 2013 AD and graduate academic session in February 2014 AD. Academic programs and courses at central campus run through six departments and schools: Humanities and Social Sciences, Management, Education, General Science, Computer Science and Information Technology, Engineering. From the academic year 2020 AD new programs B.A. LLB and BSW have been started under Humanities and Social Sciences and Law respectively. Present student enrollment at the undergraduate and graduate level are 4553 and 572 respectively, adding up to a grand total of 5125.



2. Durgalaxmi Multiple Campus

Durga Laxmi Multiple Campus (DLMC) was established in 2006 AD and formally included in FWU in 2018 AD. It is located in Godavari Municipality, Ward No. 02, Attariya. The campus premises spread across 73 ropani.

In undergraduate level DLMC offers the courses: B.A. in Sociology, Economics, English, Nepali, and Development Studies under the Faculty of Humanities and Social Sciences. B.Ed. in English Education, Health and Physical Education, Computer Science and Information Technology, and Mathematics Education under the Faculty of Education. BBS and BBA under the Faculty of Management.

In graduate level M.Ed. in Nepali, TESOL, Health and Physical Education, and Curriculum Planning and Leadership. MBS under the faculty of Management. Current undergraduate and graduate enrollment in the campus are 1796 and 99 respectively.



3. Tikapur Multiple Campus

Tikapur Multiple Campus (TMC) was established in 2001 AD as a community owned campus in Tikapur, District of Kalali. The campus has a total land area of 5058 ropani. TMC has been twice awarded the Quality Accreditation Assurance (QAA) certificate by UGC, Nepal.

TMC was included in FWU in 2018 AD. After the inclusion FWU extended its undergraduate and graduate programs to the campus.

In undergraduate level TMC offers B.A. in Economics, English, Sociology and Development Studies under the Faculty of Humanities and Social Sciences. B.Ed. in English Education, Nepali Education, Health and Physical Education and Mathematics Education under the Faculty of Education. BBS and BBA under the Faculty of Management.

In Graduate level M.A. in Development Studies and Sociology under the Faculty of Humanities and Social Sciences. M.Ed. in Nepali Education, TESOL, Health and Physical Education, and Curriculum Planning and Leadership. MBS under the faculty of Management. Overall enrollment in the campus is 1556 of which undergraduate and graduate enrollments are: 1346 and 210 respectively.



4. Triveni Multiple Campus

Triveni Multiple Campus is located in Parshuram Municipality, Ward No. 12, Dadeldhura district. It was established in 2007 AD and included in FWU in 2018 AD. The campus has a total land area of 28 ropani.

Under Humanities and Social Sciences the campus offers undergraduate program B.A. in Sociology, Economics, Development Studies and English.

Under the Management Faculty the campus offers BBS program, and under the Education Faculty B.Ed. in Nepali Education, English Education and Health and Physical Education. Currently the overall student enrollment in the campus is 420.



5. Manilek Multiple Campus

Manilek Multiple Campus is located in Melauli Municipality, Ward No. 07 Kanda. The campus was established in 2009 AD and included in FWU in 2018 AD. It has a total land area of 58 ropani of land.

Manilekh Multiple Campus has been running BBS program under the Faculty of Management, and B.Ed. in Nepali Education, English Education, Health and Physical Education, and Mathematics Education under the Faculty of Education.

The current student enrollment in the campus is 171.



6. Patan Multiple Campus

Patan Multiple Campus is located in Patan Municipality, Ward No. 06 and has a total land area of 20 ropani. It was established as the first community owned campus in Baitadi district in 1985 AD. In 2018 AD the campus was included in FWU.

Patan Multiple Campus has been running undergraduate and graduate courses based on FWU curriculum since its formal inclusion in the university. Under the Faculty of Humanities and Social Sciences, the campus offers undergraduate program B.A. in Development Studies, Sociology and Mass Communication and Journalism.

Under the Faculty of Management the campus offers BBS program. Under the Faculty of Education the campus offers B.Ed. in Nepali, English and Health and Physical Education.

Currently overall enrollment in the campus is 285.



7. Jagannath Multiple Campus

Jagannath Multiple Campus was established in 1989 AD as a community owned campus in Gothalapani, Dashrath Chand Municipality, Ward No. 04, Baitadi district. It was one of the 14 campuses included in FWU in 2018 AD.

Spread across 77 ropani, the campus offers undergraduate program B.A. under the Faculty of Humanities and Social Sciences in Political Science, Economics, Sociology, and History.

Under the Faculty of Management the campus offers undergraduate program BBS. Under the Faculty of Education the campus offers undergraduate program B.Ed. in Nepali Education, English Education, Physical and Health Education, and Mathematics Education. The graduate program offered under the faculty is M.Ed. in Nepali, Physical and Health Education and Curriculum Planning and Leadership.

A total of 271 students are enrolled in the programs and courses running in the campus.



8. Gokuleshwar Multiple Campus

Gokuleshwar Multiple Campus (GMC) is located in Shaillyashikhar Municipality, Ward No. 09, Gokuleshwar, Darchula district. The campus was established in 2007 AD and included in FWU in 2018 AD. The campus premises spread across 07 ropani.

The campus offers undergraduate program B.B.S. under the Faculty of Management. GMC offers B.Ed. in Nepali Education, English Education, Health and Physical Education, and Mathematics Education and M.Ed. in Nepali Education and Curriculum Development and Leadership under the Faculty of Education.

Under the Faculty of Science and Technology the campus has been running undergraduate course B.Sc. in Physics, Chemistry, Zoology and Mathematics.

With undergraduate and graduate enrollments of 400 and 35 respectively the overall enrollment in the campus is 435.



9. Darchula Multiple Campus

Darchula Multiple Campus is located in Mahakali Municipality, Ward No. 04, Khalanga, Darchula district. This campus was established in 2002 AD as a community owned campus and included in FWU as its constituent campus in 2018 AD. The campus has a total land area of 06 ropani.

Under the faculty of Humanities and Social Sciences, DMC offers undergraduate program B.A. in Development Studies and Sociology, and graduate program M.A. in Development Studies.

Under the faculty of Management the campus offers the undergraduate program BBS.

Under the faculty of Education the campus offers undergraduate program B.Ed. in Nepali Education, English Education, Mathematics Education and Population Education, and graduate program M.Ed. in Nepali Education and Curriculum Planning and Leadership.

With 555 students enrolled at undergraduate and 64 at graduate level the overall enrollment in the campus is 619.



10. Jayaprithvi Multiple Campus

Jaya Prithvi Multiple Campus is located in JaiPrithvi Municipality, Ward No. 11, Bhojpur, Bajhang district. It was established in 1981 AD, and included in FWU in 2018 AD. The campus has a total land area of 4.5 ropami.

Jaiprithvi Multiple Campus offers B.B.S. program under the Faculty of Management, M.A. in Development Studies under Humanities and Social Sciences, and B.Ed. in Nepali Education, English Education, Health and Physical Education and Population Education, and M.Ed. in Curriculum Planning and Leadership under the Faculty of Education.

Currently 411 students are enrolled in the campus, of which 370 are enrolled at undergraduate level and 41 at graduate level.



11. Sitaram Multiple Campus

Sitaram Multiple Campus is located in Shikhar Municipality, Ward No. 09, of Doti district. It was established in 2008 AD and included in FWU in 2018. The campus has a total land area of 16 ropani.

Sitaram Multiple Campus offers undergraduate program B.Ed. in Nepali Education, English Education and Health and Physical Education. The overall enrollment is 84.



12. Ghanteshwar Seti Mahakali Multiple Campus

GhanteshwarMahakali Multiple Campus was established in 2007 AD. It is located in Joroyal Rural Municipality, Ward No. 04, of Doti district. The campus premises spread over 10.5 ropani.

The campus has been running undergraduate program B.Ed. in Nepali Education, English Education and Health and Physical Education. Current overall enrollment in the campus is 101.



13. Janata Multiple Campus

Janata Multiple Campus was established in 1991 AD as a community owned campus in Sanfebagar Municipality, Ward No. 06, Achham district. It is one of the 14 campuses included in FWU 2018 AD. The campus premises spread across 56 ropani.

Janta Multiple Campus offers undergraduate program B.A. in Political Science and Sociology under the Faculty of Humanities and Social Sciences, and undergraduate program BBS under the Faculty of Management

Under the faculty of Education the campus offers undergraduate program B.Ed. in Nepali Education, English Education, and Physical and Health Education, and graduate program M.Ed. in Nepali Education and Curriculum Development and Leadership.

With 300 students enrolled at undergraduate and 16 at graduate level the overall enrollment in the campus is 316.



14. Badimalika Campus

Badimalika Campus is located in Budiganga Municipality, Ward No. 06, Bajura district. The campus was established in 2000 AD, and has a total land area of 18.5 ropani.

The campus offers undergraduate program BBS under the Faculty of Management, B.Ed. in Nepali Education, English Education, Health and Physical Education and CSIT under the Faculty of Education and B.A. in Sociology Political Science and Nepali under the Faculty of Humanities and Social Sciences.

The current overall enrollment in the campus is 625.



15. Bajura Campus

Bajura Campus is located in Badimalika Municipality, Ward No. 08, near Martadi, the headquarters of Bajura district. It was established in 2006 AD and has a total land area of 12 ropani.

The campus offers BBS program under the Faculty of Management, B.Ed. in Nepali Education, English Education, Health and Physical Education under the Faculty of Education, and B.A. in Development Studies under the Faculty of Humanities and Social Sciences. Courses offered at the graduate level are: M.A. in Development Studies and M.Ed. in Nepali and Curriculum Planning and Leadership.

The current overall enrollment in the campus is 574.



16. Kailali Multiple Campus

Kailali Multiple Campus (KMC) is situated in Dhangadhisub-metropolitan city, Ward No. 08, Campus Road. It was established in 1980 AD, and included in FWU in 2020 AD. The campus size is over 360 ropani.

Quality education, qualified and experienced faculty members, excellent infrastructure and affordable fees are some of the attractions of KMC that make it a popular choice among students in the region. KMC has been twice awarded the Quality Accreditation Assurance (QAA) certificate by UGC, Nepal.

The campus offers following programs and courses in Undergraduate level B.A. in Sociology, Economics, English, Nepali, Political Science, and Development Studies under the Faculty of Humanities and Social Sciences. B.Ed. in English Education, Health and Physical Education, Curriculum Planning and Leadership under the Faculty of Education. BBS and BBA under the Faculty of Management. General B.Sc. and B.Sc. CSIT under the Faculty of Science and Information Technology.

In graduate level M.A. in Sociology, Economics, English, Nepali, Political Science, and Development Studies under the Faculty of Humanities and Social Sciences. M.Ed. in TESOL, Nepali Education, Mathematics Education, Health and Physical Education, Curriculum Planning and Leadership Education under the Faculty of Education. MBS and MBA under the Faculty of Management

The current overall enrollment in the campus is 3789, out of which 3515 students are enrolled at the undergraduate level and 274 at the graduate level.



Far Western University: Central Departments and Schools

Department of Humanities and Social Sciences

Central Department of Humanities and Social Sciences was established after the inclusion of the then Shri Siddhanath Multiple Campus in Far Western University in 2012 AD. Currently the department offers research programs PhD in English, MPhil in English and Nepali, and Master of Arts program in English, Sociology and Development Studies. The department also offers undergraduate program Bachelor of Arts in English, Nepali, Geography, History, Political Science, Economics, Sociology, Development Studies, Journalism and Mass Communication.

From the academic session 2021 AD the department launched new programs BA LLB and BSW. Overall enrollment in the department is 601, with 471 at the undergraduate and 130 at graduate level.

Department of Education

Central Department of Education began operating in 2012 AD after the Far Western University launched its academic programs. The department offers research programs PhD in English Education, and MPhil in English Education and Nepali Education, and Master of Education program in English Education, Nepali Education, Mathematics Education and Health and Physical Education and Special Needs Education.

The department also offers undergraduate program Bed in English Education, Nepali Education, Mathematics Education, Health and Physical Education and Computer Science and Technology. Overall enrollment in the department is 1285. Undergraduate and graduate share in the enrollment is 1151 and 134 respectively.

School of Management

Central Department of Management began operating in 2012 AD after Shri Siddhanath Multiple Campus was included in Far Western University converted into the university central campus.

The Department offers research programs PhD and MPhil, graduate programs MBA and MBS and undergraduate programs BBS and BBA.

Current overall enrollment is 2494 of which 2186 are enrolled in undergraduate level programs and 308 in graduate programs.

Department of General Science

Central Department of General Science was established in 2012 AD. The department initially offered undergraduate program BSc in Physics, and in 2015 AD launched B.Sc. in Biology, Environmental Science and Microbiology. The current overall enrollment in the department is 107.

Department of Computer Science and Information Technology

Central Department of Computer Science and Information Technology operated under the General Science Department since it was established in 2012 AD. From the academic year 2017 AD. Department of Computer Science and Information Technology started operating as a separate department.

Currently there are 219 students enrolled in the department.

School of Engineering

The Faculty of Science and Technology, transferred the four years B.E. program in Civil Engineering to the newly established Faculty of Civil Engineering after running it for three years from 2013-2016AD. The eighth senate of Far Western University held on 18th December, 2020 AD amended the name of the department to School of Engineering.

School of Agriculture Science

The Office of the Dean of Agriculture Science was established in 2018 AD in the premises of Tikapur Multiple Campus. The Department of Agriculture Science was established to administer, and manage the academic programs of Agriculture Science. The eighth senate of Far Western University held on 18th December, 2020 AD amended the name of the department to School of Agriculture Science.

School of Agriculture Science offers B.Sc. in Agriculture Science. Number of seats allotted in each fresh batch is 100. From the academic session 2020/21 AD, ten seats have been reserved for permanent employees of the Government of Nepal as well. Keeping in view the future prospects of agricultural training and education, the faculty has plans to launch B.Sc. in Animal Science and Fisheries, and M.Sc. Agricultural statistics and Agrometeorology.

School of Agriculture Science has been running student centered learning, research and agriculture techniques programs in coordination with federal, provincial and local governments and various donor agencies.

From the academic year 2019/2020 AD, School of Agriculture Science has started publishing its annual magazine “Krishi Vigyan Prabidhi Darpan”. Current overall enrollment in the School is 403.

Programs Offered by Far Western University

Faculty	Undergraduate	Graduate	M.Phil.	Ph.D.
Humanities and Social Sciences	<ul style="list-style-type: none"> • Economics and Planning • Political Science • Rural Development • Nepali Language and Literature • English Language and Literature • Sociology • Political Science • Geography and Regional Studies • History and Cultural Studies • Journalism and Mass Communication • B.S.W. 	<ul style="list-style-type: none"> • English Language and Literature • Rural Development Studies • Sociology • Economics 	<ul style="list-style-type: none"> • English • Nepali 	<ul style="list-style-type: none"> • English
Management	<ul style="list-style-type: none"> • B.B.A. • B.B.S. 	<ul style="list-style-type: none"> • MBA • MBS 	<ul style="list-style-type: none"> • Management 	<ul style="list-style-type: none"> • Management
Education	<ul style="list-style-type: none"> • English Language Teaching • Nepali Language and Literature • Mathematics • Population • Health and Physical Science • Computer Science and Information Technology 	<ul style="list-style-type: none"> • TESOL • Nepali Language and Literature • Curriculum, Planning and Leadership • Mathematics Education • Health and Physical Education • Special Need Education 	<ul style="list-style-type: none"> • TESOL • Nepali • Curriculum, Planning and Leadership 	<ul style="list-style-type: none"> • TESOL
Science and Technology	<ul style="list-style-type: none"> • General Science • Computer Science and Information Technology 			
Engineering	<ul style="list-style-type: none"> • B.E. Civil Engineering • Computer Engineering 			
Agriculture	<ul style="list-style-type: none"> • B. Sc. Agriculture 			
Law	<ul style="list-style-type: none"> • B.A. LL. B. 			

Campus Wise Undergraduate Enrollment Details for the Academic Year 2078/079

Name of the Campus	Humanities	Management	Education	Science	Enginnering	Agriculture	Law	Total
University Central Campus	471	2186	1151	326	327	—	92	4553
Kailali Multiple Campus	1246	1373	637	167	—	—	92	3515
Durgalaxmi Miltiple Campus	500	750	546	—	—	—	—	1796
Tikapur Multiple Campus	474	547	277	—	—	403	48	1749
Triveni Multiple Campus	4	122	294	—	—	—	—	420
Manilek Multiple Campus	—	35	136	—	—	—	—	171
Patan Multiple Campus	78	65	142	—	—	—	—	285
Jagannath Multiple Campus	1	151	119	—	—	—	—	271
Gokuleshwar Multiple Campus	—	68	325	7	—	—	—	400
Darchula Multiple Campus	148	133	274	—	—	—	—	555
Jayaprithivi Multiple Campus	—	87	283	—	—	—	—	370
Sitaram Multiple Campus	—	—	84	—	—	—	—	84
Ghanteshwar Seti Mahakali Multiple Campus	—	—	101	—	—	—	—	101
Janata Multiple Campus	10	72	218	—	—	—	—	300
Badimalika Campus	40	57	528	—	—	—	—	625
Bajura Campus	180	117	217	—	—	—	—	514
Total	3152	5763	5332	500	327	403	232	15709

Campus Wise Graduate Enrollment Details for the Academic Year 2078/079

Name of Campus	Humanities	Management	Education	Total
University Central Campus	130	308	134	572
Kailali Multiple Campus	116	131	27	274
Durgalaxmi Multiple Campus	00	38	61	99
Tikapur Multiple Campus	116	44	50	210
Gokuleshwar Multiple Campus	00	00	35	35
Darchula Multiple Campus	42	00	22	64
Jaya Prithvi Multiple Campus	25	00	16	41
Janata Multiple Campus	00	00	16	16
Bajura Campus	29	00	31	60
TOTAL	458	521	392	1371

Research Level Enrollment Details for the Academic Year 2078/079

Program	MPhil	PhD
Faculty of Humanities and Social Sciences		
English	28	07
Nepali	07	00
TOTAL	35	07
Faculty of Education		
TESOL	29	04
Nepali Education	21	01
Curriculum, Planning and Leadership	27	00
TOTAL	77	05
Faculty of Management		
Management	30	04
TOTAL	142	16

Total Student Enrollment for the Academic Year 2078/079

Faculty	Undergraduate	Graduate	MPhil	PhD	Total
Humanities and Social Sciences	3152	458	35	07	3652
Education	5332	392	77	05	5806
Management	5763	521	30	04	6318
Science and Technology	500				500
Engineering	327				327
Agriculture Science	403				403
Law	232				232
TOTAL	15709	1371	142	16	17238

Details of Faculty Members and Staff in Far Western University

Post	Female	Male	Total
Teaching Staff			
Professor	01	16	17
Associaite Professor	01	46	47
Assistant Professor	20	224	244
Teaching Assisat	08	77	85
Instructor	19	79	98
Total	49	442	491
Non- Teaching Staff			
Joint Administrator	0	1	1
Deputy Administrator	0	3	3
Assistant Administrator	6	21	27
Head Assistant	9	27	36
Assistant	14	25	39
Spporting Staff	09	64	73
Total	38	142	179
Grand Total	87	584	670

Far Western University Partner Organizations

S.No.	Organization	Date of MoU
1.	Shinawatra University, Thailand	1 st May, 2013
2.	Mid West University, Surkhet	6 th April, 2017
3.	Nepal NetraJyotiSangha, kathmandu	3 rd August, 2017
4.	Bhimdutta Municipality, Mahendranagar	19 th November, 2017
5.	Language Commission, Kathmandu	27 th December, 2017
6.	Changwon National University, South Korea	26 th January, 2018
7.	Nepal Bank Limited, Kathmandu	27 th May, 2018
8.	GyeongsangNational University, South Korea	27 th January, 2019

Far Western University Details of Senate Meetings

S.No.	Senate	Presided by	Date	Venue
1.	First	Hon'ble P.M. and Chancellor Dr. Baburam Bhattarai	2069/06/05	Hotel Himalya, Lalitpur
2.	Second	Chairman of Cabinet Hon'ble Khil Raj Regmi	2070/05/30	National Planning Commission, Singha Durbar, Kathmandu
3.	Third	Minister of Education and Pro Chancellor Hon'ble Mrs. Chitralekha Yadav	2071/06/06	Ministry of Education, Singha Durbar, Kathmandu
4.	Fourth	Hon'ble P.M. and Chancellor K. P. Sharma Oli	2072/07/17	Prime Minister's Official residence, Baluwatar, kathmandu
5.	Fifth	Hon'ble P.M. and Chancellor Pushpa Kamal Dahal 'Prachanda'	2073/05/15	Prime Minister's Official residence, Baluwatar, kathmandu
6.	Sixth	Hon'ble P.M. and Chancellor Sher Bahadur Deuba	2074/04/26	Prime Minister's Official residence, Baluwatar, kathmandu
7.	Seventh	Hon'ble P.M. and Chancellor K.P. Sharma Oli	2075/05/31	Prime Minister's Official residence, Baluwatar, kathmandu
8.	Special	Hon'ble P.M. and Chancellor Sher Bahadur Deuba	2075/09/29	Central Campus, Mahendranagar
9.	Eighth	Hon'ble P.M. and Chancellor K.P. Sharma Oli	2077/09/03	Prime Minister's Official residence, Baluwatar, kathmandu
10.	Nineth	Hon'ble P.M. and Chancellor Sher Bahadur Deuba	2078/09/17	Prime Minister's Official residence, Baluwatar, kathmandu

Authoriteis of the University

S.N.	Post	Name	Email
1.	Vice Chancellor	Prof. Dr. Ammaraj Joshi	vc@fwu.edu.np
2.	Chairperson, Service Commission	Prof. Dr. Purna Bahadur Chand	chair.usc@fwu.edu.np
3.	Registrar	Prof. Yagya Raj Pathak	registrar@fwu.edu.np
4.	Member, Service Commission	Prof. Padamkant Joshi	member.usc@fwu.edu.np
5.	Dean, Faculty of Humanities and Social Sciences	Prof. Dr. Mukund Ballav Kalauni	dean.humanities@fwu.edu.np
6.	Dean, Faculty of Science and Technology	Prof. Dr. Bhawani Chand Thakuri	dean.science@fwu.edu.np
7.	Dean, Faculty of Management	Prof. Dr. Padam Raj Joshi	dean.management@fwu.edu.np
8.	Dean, Faculty of Agriculture Science	Dr. Lal Prasad Angai	dean.agriculture@fwu.edu.np
9.	Dean, Faculty of Education	Dr. Bhawani Singh Chalaune	dean.education@fwu.edu.np
10.	Dean, Faculty of Engineering	Dr. Kishan Datta Bhatta	dean.engineering@fwu.edu.np
11.	Dean, Faculty of Law	Mr. Karna Bahadur Thapa	dean.law@fwu.edu.np
12.	Chief, Planning	Mr. Suresh Singh Bhandari	chief.planning@fwu.edu.np
13.	Director, Language, Literature and Centre	Dr. Harish Chandra Bhatt	director.lang_culture@fwu.edu.np
14.	Director, Curriculmn Development Centre	Dr. Rajendra Prasad Bhatt	director.cdc@fwu.edu.np
15.	Deputy Dean, Faculty of Management	Mr. Hari Shankar Pant	panthari29@gmail.com
16.	Deputy Dean, Faculty of Education	Dr. Madan Singh Deupa	madandeupa14@gmail.com
17.	Deputy Dean, Faculty of Humanities and Social Sciences	Dr. Prem Singh Bhat	prembhat488@gmail.com
18.	Controller of Examinations	Mr. Dev Singh Nath	infoexam@fwu.edu.np
19.	Deputy Controller of Examinations	Mr. Bir Bahadur Singh Thakuri	deputy.exam@fwu.edu.np
20.	Deputy Controller of Examinations	Mr. Govind Ballav Bhatt	deputy.exam@fwu.edu.np

Campus Chief

1.	University Central Campus	Prof. Kumbh Bahadr Chand	principal@fwu.edu.np
2.	Kailali Multiple Campus	Prof. Dr. Dharma Raj Upadhaya	kailali@fwu.edu.np
3.	DurgaLaxmi Multiple Campus	Mr. Dambar Bahadur Pal	durgalaxmi@fwu.edu.np
4.	Tikapur Multiple Campus	Mr. Keshar Bahadur Kunwar	tikapur@fwu.edu.np
5.	Triveni Multiple Campus	Mr. Navraj Nath	treveni@fwu.edu.np
6.	Manilek Multiple Campus	Mr. Bhawani Singh Nayak	manilek@fwu.edu.np
7.	Patan Multiple Campus	Mr. Uttam Singh Bhandari	patan@fwu.edu.np
8.	Jagannath Multiple Campus	Mr. Prithvi Raj Awasthi	jagannath@fwu.edu.np
9.	Gokuleshwar Multiple Campus	Mr. Pradip Kumar Joshi	gokuleshwar@fwu.edu.np
10.	Darchula Multiple Campus	Mr. Krishna Singh Saud	darchula@fwu.edu.np
11.	Jaya Prithvi Multiple Campus	Mr. Mohan Raj Upadhyay	jayaprithivi@fwu.edu.np
12.	Sitaram Multiple Campus	Mr.Chetraj Bhatt	sitaram@fwu.edu.np
13.	Ghanteshwar S. M. Multiple Campus	Mr. Basudev Joshi	ghanteshwar@fwu.edu.np
14.	Janata Multiple Campus	Mr. Krishna Raj Jaisi	janata@fwu.edu.np
15.	Badimalika Multiple Campus	Mr. Bir Bahadur Katuwal	badimalika@fwu.edu.np
16.	Bajura Campus	Mr. Suresh Prasad Pandit	bajura@fwu.edu.np

Head of the Departments

1.	Department of Humanities and Social Sciences		humanities@fwu.edu.np
2.	Department of Management	Mr.Shankar Datt Bhatt	management@fwu.edu.np
3.	Department of Education	Mr.Uddhav Dev Bhatt	education@fwu.edu.np
4.	Department of Engineering	Mr.Toran Prasad Bhatt	engineering@fwu.edu.np
5.	Department of Computer Sc. and Technology	Mr. Ramesh Prasad Bhatt	cdcsit@fwu.edu.np
6.	Department of General Science	Mr. Krishna Dev Pant	science@fwu.edu.np
7.	Department of Agriculture Science	Dr. Kiran Bhatt	agriculture@fwu.edu.np

Far Western University: Members of University Senate



Rt. Hon'ble Sher Bhaadur Deupa
Prime Minister



Hon'ble Devedra Paudel
Minister, Education, Science and Technology



Prof. Amma Raj Joshi, Ph.D.
Vice Chancellor



Dr. Puspa Raman Wagle
Member, National Planning Commission



Prof. Dr. Bhim Prasad Subedi
Chair, University Grants Commission



Prof. Dr. Dharmkant Baskota
Vice Chancellor
Tribhuvan University



Prof. Dr. Prem Narayan Aryal
Vice Chancellor
Pokhara University



Yadap Prasad Koirala
Secretary, Ministry of Education, Science and
Technology



Madhusudhan Marasini
Secretary, Ministry of Finance



Rameshwar Dangal
Chief Secretary Government of
Sudurpaschim Province



Prof. Mukunda Ballav Kalaune, Ph.D.
Dean
Faculty of Humanities and Social Sciences



Prof. Lal Prasad Amgain
Dean
Dean, Faculty of Agriculture



Prof. Bhawani Chand Thakuri, Ph.D.
Dean
Faculty of Science and Technology



Prof. Padam Raj Joshi, Ph.D.
Dean
Faculty of Management



Dr. Kishan Datta Bhatta
Dean
Faculty of Engineering



Dr. Bhawan Singh Chalaune
Dean
Faculty of Education



Karn Thapa
Dean
Faculty of Law



Dr. Harish Chandra Bhatt
Director
Language, Literature and Culture Study Center



Dr. Rajendra Prasad Bhatt
Director
Curriculum Development Center



Keshar Bahadur Kunwar
Campus Chief, Tikapur Multiple Campus



Uttam Singh Bhadari
Campus Chief, Patan Multiple Campus



Mala Bhandari
Asst. Professor
Durgalaxmi Multiple Campus



Khagendra Joshi
Asst. Professor University
Central Campus



Padam Bogati
Mayor
Bhemdatt Municipality



Buddha Bahadur Thapa
Chair
Nepal Professors' Association



Uttam Bahadur Thapa
President, FWU Professors' Association



Liladhoj Basnet
Social Worker



Prof. Yagya Raj Pathak
Registrar

Far Western University: Members of Academic Council



Prof. Amma Raj Joshi, Ph.D.
Vice Chancellor
Chair



Prof. Yagya Raj Pathak
Registrar
Member



Prof. Mukunda Ballav Kalaune, Ph.D.
Dean, Faculty of Humanities and Social Sciences
Member



Prof. Lal Prasad Amgain
Dean, Dean, Faculty of Agriculture
Member



Prof. Bhawani Chand Thakuri, Ph.D.
Dean, Faculty of Science and Technology
Member



Prof. Padam Raj Joshi, Ph.D.
Dean, Faculty of Management
Member



Dr. Kishan Datta Bhatta
Dean, Faculty of Engineering
Member



Dr. Bhawan Singh Chalaune
Dean, Faculty of Education
Member



Karn Thapa
Dean, Faculty of Law
Member

Far Western University: Members of Executive Council



Prof. Amma Raj Joshi, Ph.D.
Vice Chancellor



Prof. Lal Prasad Amgain
Dean, Dean, Faculty of Agriculture



Keshar Bahadur Kunwar
Campus Chief
Tikapur Multiple Campus



Toyaraj Bhatt
Kailali Multiple Campus



Prof. Yagya Raj Pathak
Registrar

Far Western University: Members of University Service Commission



Prof. Dr. Purna Bahadur Chand
Chair



Hon'ble Madhav Belbase
Member, Public Service Commission
Member



Prof. Padmakant Joshi
Member

Far Western University: Examination Board Members



Prof. Yagya Raj Pathak
Registrar
Chair



Prof. Mukunda Ballav Kalaune, Ph.D.
Dean, Faculty of Humanities and Social Sciences
Member



Prof. Kumbha Bahadur Chand
Member



Prof. Prithivi Raj Awasthi
Member



Asst. Prof. Harikrishna Kadayat
Member



Asst. Prof. Dev Singh Nath
Member

बुलेटिन प्रकाशन समिति



सुरेशसिंह भण्डारी
योजना प्रमुख
संयोजक



उद्धवदेव भट्ट
विभाग प्रमुख
शिक्षाशास्त्र विभाग
सदस्य



अनुराधा रोकाया
सह प्राध्यापक, मानविकी तथा
सामाजिकशास्त्र विभाग
सदस्य



सन्तोष विष्ट
सहायक प्रशासक
सदस्य

Far Western University: Employees of Central Office

General Administration Division

S.N.	Post	Name	Section	Phone No.	Email
1.	Joint Administrati	Bhawani Datt Pandey	Headm General Administrative Division	9848722643	bhawani.pandey@fwu.edu.np
2.	Asst. Administrator	Santosh Bist	Planning and Monitoring Section Informaton and Communication Section	9858751161	santosh.bist@fwu.edu.np
3.	Asst. Administrator	Nabin Bahadur Bam	Human Resources Development Section Physical Resources Procurement and Protection Section	9863031168	nabin420807@fwu.edu.np
4.	Head Assistant	Iswari Joshi	General Administration Division	9849623152	iswari.joshi@fwu.edu.np
5.	Head Assistant	Ram Bahadur Chand	Store Section	9858751347	ram.chand@fwu.edu.np
6.	Assistant	Janaki Kumari Joshi	General Administration Division	9848821340	janaki.joshi@fwu.edu.np
7.	Driver	Narendra Singh Khati	Administration	9860489418	
8.	Driver	Chaturbhuj K.C.	Administration	9808074285	
9.	Driver	Kalyan Kumar Thapa	Administration	9868713458	
10.	Office Assistant	Sapana Subedi	Administration	9847509559	
11.	Office Assistant	Mamta chaudhary	Administration	9810675560	
12.	Office Assistant	Maniraj Joshi	Administration	9867591500	
13.	Electrician	Kantu Ram Chaudhary	Administration	980644907	
14.	Sweeper	Radhika Dangaura	Administration		

Finance Administration Division

S.N.	Post	Name	Section	Phone No.	Email
1.	Deputy Administrator	Ashok Singh Bhandari	Central Account Section	9848723138	ashok.bhandari@fwu.edu.np
2.	Asst. Administrator	Meen Raj Bhatt	Budget Monitoring, Internal Audit and Coordiation Section	9851146353	minraj.bhatta@fwu.edu.np
3.	Asst. Administrator	Ajay Chaudhary	Provident Fund, Gratuity and Retirement Fund	9843310652	ajay.chaudhary@fwu.edu.np
4.	Head Assistant	Balram Chaudhary	Central Account	9851159388	balramchadhary@fwu.edu.np
5.	Head Assistant	Shailesh Pal	Budget Monitoring, Internal Audit and Coordiation Section	9858751143	shailesh.pal@fwu.edu.np
6.	Head Assistant	Parvati Kumari Bhatt	Provident Fund, Gratuity and Retirement Fund	9848885433	parwati.bhatta@fwu.edu.np



FAR WESTERN UNIVERSITY

Central Office

Bheedatt-18, Mahendranagar, Kanchanpur

Web : www.fwu.edu.np

Email: info@fwu.edu.np

Phone No.: 099-520729

Fax No.: 099-520727